

TopSolid

Sheetmetal



TopSolid'Sheetmetal v6.16: your sheet metal CAD/CAM solution just got better

- A new user interface for the task manager, connected to numerous new functions
- An enriched automatic mode for more efficient production
- Stamping: automatic assignment of the tools
- New cutting functions
- New tube cutting
- New multi-blowtorch function

MASTER YOUR
MANUFACTURING PROCESS

TopSolid'Sheetmetal v6.16 your sheet metal CAD/CAM solution just got better

TopSolid'Sheetmetal is an integrated solution for the sheet metal industry that offers CAD/CAM solutions ranging from the unfolding of panels, to the control of numerical stamping machines, laser cutting machines (2 and 3 axes) and combined machines. TopSolid'Sheetmetal 2015 includes many new features that will further improve your productivity. Discover the main new features of the 2015 version.

Tasks Manager: a new user interface, connected to numerous new functions

- > An optimized user interface
- > More filters
- > Possibility to add nestings to launches
- > Management of preferred parts and nestings

An enriched automatic mode

- > Marking of parts in multi-document imports
- > Transfer of the parameters in the «flattening» document to the operator data sheet
- > Management of offcuts (configuration of the dimensions according to different criteria)

Stamping: improved automatic assignment of the tools

- > Management of notches
- > Processing of arcs by oblong tools
- > Application of a change to a nesting turret to all the nestings in a launch

Cutting: additional tools

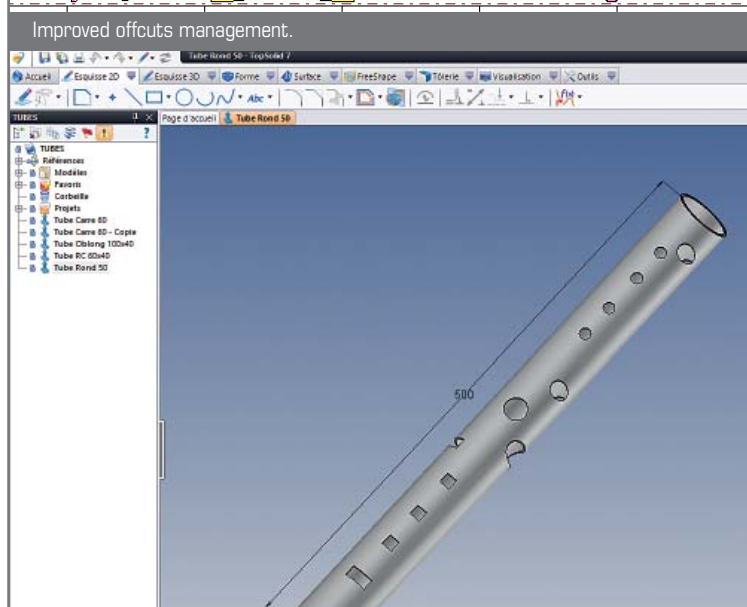
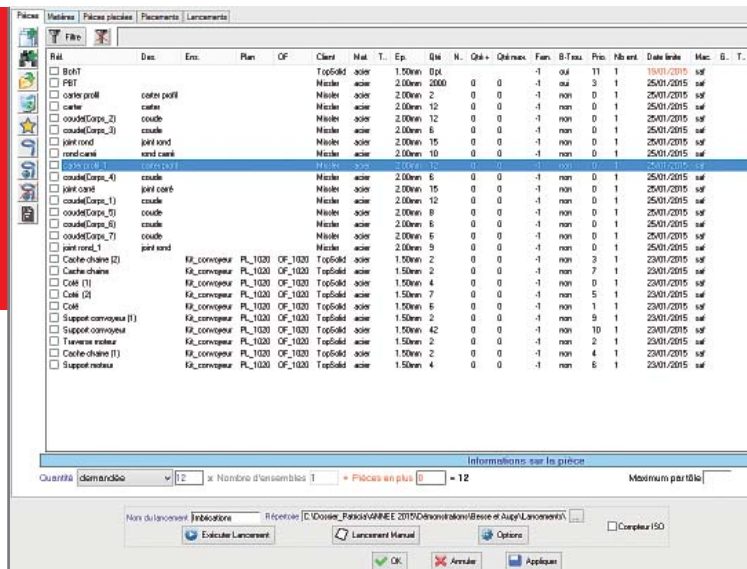
- > Free cutting in the part preparation document
- > Creation of a skeleton of any opening in the part document

Optimized management of tube and multi-blowtorch machines

- > Multi-blowtorch: possibility to choose the head number on a given trajectory
- > Tubes: automatic tube machining based on projects created in TopSolid 7

Improved V7 imports

- > Visualization of parts
- > Retrieval of part attributes



Example of a tube created in TopSolidV7.

